

IT'S SHOW TIME AGAIN...

Pioneer Valley Show

The Pioneer Valley show is holding its 52nd annual show on Sunday the 14th of June. The show is an iconic event in the community, widely regarded as one of the best show days in Queensland. Its is a country-orientated, fun, family day, which on average attracts 16,000 people to the small town of Finch Hatton.

PCL will be exhibiting at the show giving us the opportunity for our project officers to engage with the community and local landholders about revegetation, Land for Wildlife, weeds, pests and various land management issues.

Pioneer Catchment gave away a staggering 450 plants at last years show.

Looking forward to meeting you there!

Soil Health Field Day

The recent Soil Health Field Day & Composting Workshop held at Marian on 26-27 May brought to light a resource useful to anyone interested in improving their soil's health & productivity:

<http://theunconventionalfarmer.com> has information on composting, organic fertilisers and soil microbes useful to farmers and gardeners alike.

A full report on the event will be provided in July's newsletter.

Did you Know?



Australia is facing a looming biosecurity threat to our food crops in the death of the bee.

Without bees, 65% of our food crops disappear!

For more information contact Landcare Australia.

2015 Mackay Coastal Clean Up

Volunteers were invited to participate in the sixth Mackay Coastal Clean Up held on Saturday the 23rd of May. The clean up was an initiative of the Eco Barge Clean Seas Inc. and BHP Billiton Mitsubishi Alliance (BMA), with Pioneer Catchment & Landcare sponsoring the clean up of Far Beach.

On the Saturday, 200 volunteers braved the cold wind and helped in the removal of 2,514 kilograms of marine debris from five beaches in the Mackay region.

Twenty-Eight (28) Volunteers meet at Illawong Park at 9am and collected rubbish till 11.30. A staggering 418 kilograms was collected which included car tyres and a couch.

Pioneer Catchment & Landcare would like to extended a thankyou to Project Officer Lara Mathewson and the volunteers who were involved in making this event a huge success.



Right: From left to right Tahlia, Lara, Gordon, Jan and Jake at the 2015 Mackay Coastal Clean up.



Left: Volunteers Jake and Rudy with a tyre collected off Far Beach during the Mackay Coastal Clean up.

Membership Renewals are Due NOW!!

PCL membership renewal reminders have been circulated to members throughout the last month. If you haven't received your renewal please contact the office immediately to have it sent out, or go to our website www.pioneercatchment.org.au/pioneer/membership.html.

If you are not yet a member of PCL but would like to be, membership information and applications are available at the same web address or contact the office for more information.

Northern Wattle

Family: Mimosaceae

Habit: A small to medium tree with a fairly dense, rounded crown. Bark on older trees is deeply furrowed.

Leaves: The 'leaves', around the 12-21 x 1-2.5cm, have 3 prominent, yellowish, longitudinal veins with parallel secondary veins, spaced about 1mm apart.

Flower/Fruit: In winter, the bright yellow flowers are borne in moderately dense, paired spikes, 5-7cm long. The narrow pods, about 12cm x 3mm, are somewhat coiled and flat but raised over the seeds. The seeds are longitudinal in the pod and have a yellow-orange funicle which is folded many times forming an aril almost as long as the seed. Fruits from September to October.

Propagation: Remove seeds from the pods and treat with hot water before sowing.

Local Habitat: Beach scrub / open forest woodland.

Distribution: Coastal belt from central Queensland to Cape York; Northern Territory and Western Australia.

(Source: Alcock & Champion, 1989 *One Hundred and One Trees of Mackay*)



Weed Spotting

Ipomoea indica

Blue Morning Glory

Family: Convolvulaceae

Form: Vigorous perennial climber, hairy stems, rooting at nodes.

Leaves: Broadly ovate to orbicular, 30-180 x 25-150mm, base heart shaped, margins entire or 3-lobed; dull green above with dense short soft hairs, paler and velvety hairy below, hairy stalks 10-130mm long.

Flowers: Bright blue to purplish with a white to pinkish tube, 65-80mm across; borne in 2 several-flowered groups on 40-200mm stems.

Fruits / Seeds: Not seen in Australia

Notes: Native of America, now a serious environmental weed in this region invading roadsides, rainforest margins and vine thickets.

Spread by: Vegetative material and / or seeds in garden waste, water, contaminated soil on machinery, vehicles, contaminated pasture seeds and contaminated forest mulch.

(Source: Weeds of the Mackay Whitsunday Region, MRPMG, 2013)



Land-for-Wildlife

Kerry Dempsey has been a Land For Wildlife participant since March 2014. From the time since joining Kerry has been working at clearing the property of weeds both mechanically and manually. The weeds were so thick that Kerry was unaware of the natural beauty hidden beneath. Upon clearing one section Kerry unveiled a beautiful meandering creek that traverses the property.



Above: An area of Kerry's Property infested with Centro Centrosema molle prev. C. pubescens, yet to be tackled by Kerry. An indication of how invasive the weeds are and of how much work Kerry has done to clear other areas of her property.

Utilising existing items uncovered on the property Kerry has constructed some impressive ornamental gardens that are planted with natives.

Kerry's work has ensured her property is an oasis in the midst of surrounding properties that have severe weed infestations. The work against the spread of weeds into the property is continuous.

If you would like advice on weed removal or realising the full potential of your property please contact our office for information on the Land For Wildlife Program.



Above: One of the many ornamental rock gardens created by Kerry utilising fallen timber and rocks uncovered on the property.

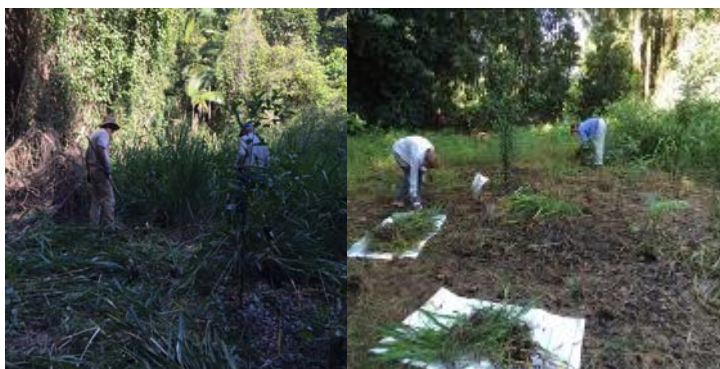
Landcare Activities in May 2015...

Reliance Creek

For three Tuesdays in April the Nursery volunteers spent their usual Tuesday mornings at Reliance Creek, weeding in the revegetation area.



Clockwise from Top Left: Rob, Julie, Peter and David with bags of Ruellia tweediana collected; Antonia and Peter relaxing after clearing around this tree; Antonia and Robyn hard at work; David and Bob attacking Guinea Grass.



Displays



Above; Margaret Lane and Kerry Dempsey with the Pest Management Trailer at the Farleigh Palm Fete



Left: The Pioneer Catchment & Landcare display at the 2015 Ag. Trade. Life Expo.



Right: Local Habana Landholder Peter Vella, releasing a tortoise into Reliance Creek after fining it on the road.

Upcoming Events

June

Thursday 3—Reef Catchments Grazing Forum

Friday 5—Community Engagement Event

Sunday 7—Birdlife Mackay outing, Cameron's Pocket

Saturday 13—Morag McNichol Reserve Working Bee

Sunday 14—Pioneer Valley Show

Tuesday—Thursday 23—25—Mackay Show Day

July

Saturday 4—Morag McNichol Reserve Working Bee

Sunday 5—Birdlife Mackay Outing—Hay Point

Wednesday 24—Morag McNichol Reserve Working Bee

Friday 24—School Tree Day

Saturday 26—National Tree Day

Now available for purchase

"Weeds of the Mackay Whitsunday Region"

For Sale

Weeds of the Mackay Whitsunday Region for \$35, with a special price to PCL members of \$30.



THANK YOU...

Pioneer Catchment & Landcare Group would like to thank Ruth Croker

For the donation of books our Library.

Australian Native Plants by John W Wrigley and Murray Fagg

Top End Native Plants by John Brock

Rainforest Plants of Eastern Australia by Steve and Alison Pearson.

Pioneer Catchment & Landcare Group Inc. Management Committee

Chair: Dave Hunter

Vice-Chair: Di Salau

Treasurer: Margaret Lane

Committee Members:

Irene Champion

Caitlin Davies

Grant Howard

Cr Theresa Morgan

Dianne Williams

Pioneer Catchment & Landcare Group Inc. Office contacts:

Office: 07 4944 1979

Website: www.pioneercatchment.org.au

Office Manager: Wendy Eiteneuer, 0447 749 769
admin@pioneercatchment.org.au

Project Officer: Lara Mathewson
lara.mathewson@pioneercatchment.org.au

Project Officer: Carla Lambropoulos, 0497 441 979
projectofficer@pioneercatchment.org.au

Project Officer: Laura Whitbread
laura.whitbread@pioneercatchment.org.au

Pioneer Catchment & Landcare Group Inc. Proudly supported by:



June 2015

POSTAGE
PAID
AUSTRALIA

If unable to be delivered please return to

Pioneer Catchment & Landcare Group Inc.

PO Box 1076

MACKAY Qld 4740