

Annual Report 2009/2010



September 2010

<i>Inside this issue:</i>	
Chairman's Annual Report	1 to 2
Coordinator's Report	2
09/10 Management Committee & staff	3
SLCMA Organisational Objectives, vision & Membership 09/10	3 To 4
Supporting our local schools & youth groups	4
Program & project updates: <ul style="list-style-type: none"> • SLCMA community volunteer program • SLCMA community nursery • Sarina Green Corps & National Green Jobs Corps • Coastal management • Monitoring & remediation of blue green algae outbreaks in coastal aquatic ecosystems • Sarina community native garden • Supporting landholders within the Sarina Catchment • Other projects delivered 	5 To 7
Communication & publications	7
Supporting community events	8
Working Groups Supported	8
Conferences, workshops & courses	8

Chairman's Annual Report

I have much pleasure in delivering this report of the activities of SLCMA. When I was granted this privilege of being your Chairman I did not realise the difficulties our association would encounter. Like the rest of the world we had our own financial crises. Through no fault of our own this was precipitated by modifications to our previous funding mechanisms.

I must thank in no small measure our exceptional management team, Duane Brown, Ray Greaves, Cath Hutton Rod McFadden and the late John Airolidi along with our dedicated staff, Coordinator Saskia von Fahland and Administration Officer Nadine Hamill for their diligent and dedicated work in maintaining regular activities during these troubled times. Following protracted negotiations and seemingly unrewarding meetings over several months it is now possible to report that we could be entering into a more secure era. Only time will tell.

The loss of John Airolidi so suddenly was a blow to our organisation, he was extremely active and in all our activities and you can be assured that he will be still active in the afterlife. We may even get him back if he becomes too difficult.

The Sarina Community Native Garden is next door to our offices, a demonstration garden showcasing native species being used in urban and rural gardens was further progressed thanks to Project Officer Lauren Murphy who unfortunately resigned in December 09 to return to her home in the southern states. At least she was not snapped up by Reef Catchments.

Our recently engaged Project Officer Margaret Meng who slotted in well, will be continuing to develop it along with other tasks such as the African Tulip Tree Project. SLCMA has received funding through Mackay Regional Council, Natural Environment Levy to conduct the African Tulip Tree Pilot Project. The project aims to identify and prioritise infestations and establish a trial control program.

The Community Nursery Volunteers have continued to give generously of their time, meeting each Wednesday in all weather for field excursions, seed collecting finding out more about our local native plants, how to propagate them, gain skills in general nursery activities and meet some other great volunteers. Please feel welcome to come along, we can always find room for you.

SLCMA has a very successful stall at Sarina Markets each month at the Sarina showgrounds where we have plants & plant guard kits, resource books for sale. Information of a general Landcare related nature can be resourced by the people staffing the stall.

SLCMA staff, volunteers, members, families and friends joined the "gum nut" team for the Sarina Relay for Life recently. The community event aims to help raise funds for the QLD Cancer Council and support those effected by Cancer. Throughout the 18 hours of the relay there was live music and entertainment from fire twirlers and dancers, as well as motivational chanting "every lap deserves a clap" in the wee hours of the morning, that kept all the teams' buttons moving.

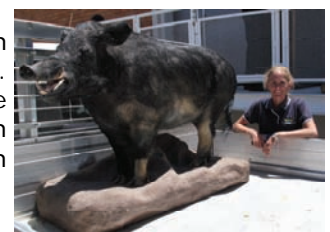
SLCMA in partnership with Conservation Volunteers Australia and Coalport Community and Recreation Association successfully hosted *Clean Up Australia Day* at Louisa Creek.

The Queensland Landcare Conference was held in Longreach this year with attendance by SLCMA members. The trip out to Longreach was kept interesting, with the company of our mate "Bruce" a taxidermied pig on loan from DPI. You may have met "Bruce" at the Pig Information Session conducted in November.

continued over page...



Chairman, Nick Kenyon



Chairman's Annual Report continued...

SLCMA in partnership with Conservation Volunteers Australia, delivered a new Australian Government work experience and training program called *National Green Jobs Corps*. The part time team started at the end of March and ran for 6 months.

One of our better achievements was conducting the Sarina Native Garden Competition. All entrants received 5 free native plants, donated through the SLCMA Community Native Plant Nursery and the total prize money of \$500, was kindly sponsored through the Natural Resource Awareness Grants Program, QLD Government. There are not too many Garden Competitions of this value around.



SLCMA display at Coal to Coast Festival

Approximately 350 students from local primary schools in the Sarina catchment gathered at Apex Park, embarking on a shared learning experience about our waterways. SLCMA recently held an educational, interactive school activity program themed "Caring For Our Coasts". Over two days, 220 students from Alligator Creek and St Annes Primary schools explored the coastal zones of Sarina Beach, to find out about the importance of our coastal environment, the animals and plants that live there and ways to protect them for the future. This activity amongst the children bodes well for the future in our catchment.

Staff conducted a MacReef survey at major Boat ramps in the Catchment. This was a community based monitoring program for the Mackay region designed to improve community involvement & knowledge about the management of the Great Barrier Reef ecosystem and commercial & recreational fisheries activities.

The Blue Green Algae Project is almost complete and is in its final stages. The project has been developed with the aim to reduce the frequency of blue green algae blooms in Middle Creek Dam. A reduction in blue green algae blooms will benefit the aquatic environment, providing suitable conditions for aquatic life and improve general water quality.

I would like to thank all our supporters and sponsors who contributed over the year in making this another Landcare success.

Nick Kenyon, Chairperson.



Coordinator, Saskia von Fahland

Coordinator's Report

I have the pleasure in giving my 6th annual report to our Landcare members, as Coordinator of SLCMA. The past year has once again flown by, but not without a variety of projects being delivered and some great outcomes achieved.

This was the last year of the 3 year, *Sarina Coastal Sustainable Landscapes Program* (funded through the BMA Community Partnerships Program). The program was the "implementation stage" following the development of the *Sarina Shire Beaches Management Guidelines for Coastal Zones* in 2004 and aimed to protect and enhance the coastal zones of Sarina's developed beaches. While this aim was quite ambitious, I believe we have definitely raised the profile of "coastcare" within the beach community, have implemented great on-ground works and are heading in the right direction.

The year has not all been plane sailing, with some uncertainty in securing long-term funding for SLCMA and the other Landcare groups within the region. As a result, we have strengthened our partnership with the Pioneer Catchment & Landcare Group and Whitsunday Catchment Landcare through the formation of the *Central QLD Coast Landcare Network* and have been actively lobbying all levels of government for

continued support as well as submitting many funding applications. Despite this, SLCMA is going strong and will be, into the foreseeable future.

To our Community Nursery Volunteers who donate their valuable time to ensure the Community Nursery is in tip-top shape — thank you. It is always a pleasure to work alongside a great bunch of volunteers who bring a variety of experiences, skills and interests.

Thank you to the SLCMA Management Committee, Nick Kenyon, Duane Brown, Rod McFadzen, Ray Greaves, Cath Hutton and the late John Airoidi who have dedicated their time to guide SLCMA's future direction.

I have had the pleasure working with my colleagues, Nadine Hamill (Administration Officer), Lauren Murphy (previous Project Officer) and more recently Margaret Meng (current Project Officer), all of whom help keep the SLCMA office, our projects and programs functioning efficiently.

I would like to acknowledge Mackay Regional Council for their continued valuable support for SLCMA and our activities. A big thank you to our project partners, Landcare members and volunteers who continue to advocate for Landcare within our region.

Cheers, Saskia von Fahland



Some of our SLCMA Nursery volunteers!

2009/2010 Management Committee Members & Staff

Chair
Vice Chair
Secretary
Treasurer
Other

Nick Kenyon
Duane Brown
Ray Greaves
Cath Hutton
Rod Mc Fadzen
John Airolidi

Coordinator
Administration Officer
Project Officer

Saskia von Fahland
Nadine Hamill
Margaret Meng (current)
Lauren Murphy (prev.)

Organisational Objectives

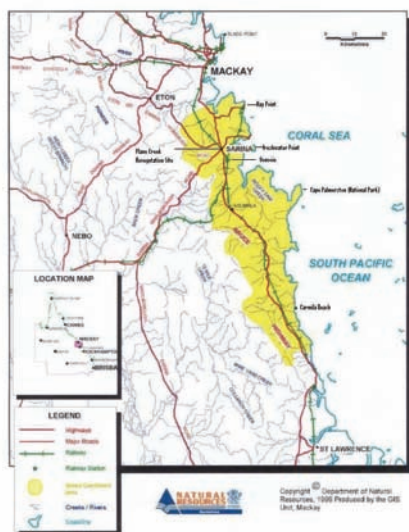
The objectives of Sarina Landcare Catchment Management Association Incorporated are:

- To promote a strategic and integrated approach to natural resource management and biodiversity conservation in the Sarina Catchment area.
- To foster coordination and cooperation between land managers, community groups, industry and government agencies in their natural resource management activities.
- To promote understanding and awareness of the interactions and relationships between the natural systems and resources of the catchment.
- To identify and prioritise natural resource management issues within the Sarina Catchment Area.
- To prepare, coordinate and implement priority action plans identified in the Sarina ICM Strategy.
- To promote sustainable solutions and actions through strong community, industry and government partnerships in catchment management strategies.
- To provide a forum for community and government discussion on natural resource and catchment management issues.

SLCMA holds monthly general meetings



SARINA CATCHMENT AREA



SLCMA's Vision and Goals

Vision for the Sarina Catchment

The Sarina Catchment Area is an economically viable region, which is ecologically sustainable and well regarded as a healthy place to live and work

Goals

Land Use Planning: The land resources of the Catchment are managed in an ecologically sustainable manner.

Land Management: The most appropriate ecologically and economically sustainable land management practices are adopted throughout the catchment.

River/Creek Management: The creek systems are managed in such a way as to enhance and maintain their natural values while providing for the needs of the catchment community.

Water Management: The integrity of the natural systems within the catchment are enhanced and maintained while providing water of a suitable quality and quantity to meet the needs of the community.

Coastal Management: Management of the coastal area in a way that will ensure the sustainable use of the natural resources

Vegetation/Biodiversity: The native vegetation and biodiversity values of the catchment are enhanced and maintained and the natural systems are not further degraded.

Community Awareness and Involvement: A community that is aware of the need to maintain and improve the natural resources of the catchment and is actively involved in doing so.

SLCMA Membership benefits!

A membership with SLCMA has many rewards:

- ◇ Easy access to Natural Resource Management information and extension
- ◇ Monthly newsletter, meeting minutes, progress and project reports
- ◇ A vote on issues in your catchment
- ◇ A say in the types of projects applied for
- ◇ Up to 20 free local native seedlings from the SLCMA Community Nursery each year
- ◇ Invitations to Natural Resource Management bus tours, field days and workshops
- ◇ Copy of the SLCMA Annual Report

SLCMA Membership 09/10

Class of Membership	Is membership of the class to be limited or unlimited in number?	If the class of membership is to be limited in number, how?	Limitations relating to the class of membership	Entry requirements for class of membership	09/10 membership <i>(Number of members)</i>
Government Organisation Member	Unlimited	N/A	1. Full voting rights	Open to nominated Councillors of local authorities within the Association's catchment area, and nominated officers of State Government departments or authorities, or divisions or branches within them.	17
Associate Member	Unlimited	N/A	1. Full voting rights	Shall be opened to nominees of: Companies and Cooperatives carrying out activities within the Catchment area. Local organizations and institutions. Local groups with a direct interest in land use	18
Ordinary Landcare Member	Unlimited	N/A	1. Open to any adult owners or occupiers of land 2. Full voting rights	1. Must be over 18 years of age 2. Annual fee for membership, the amount to be decided at an annual general meeting	158
Junior Member	Limited	There are to be no more than 50 Junior members at any time	1. May not vote 2. Not eligible for election to management committee positions	1. Must be under 18 years of age 2. Must be a registered Junior Landcare member.	23

Supporting our local schools & youth groups

SLCMA has had an active role in providing a range of support to schools and other youth groups throughout the year. This has included facilitating activities such as:

- **Sarina Scouts Club**— Plant propagation & nursery work at the SLCMA Community Nursery
- **Sarina Primary school**— Water quality & catchment management, macro-invertebrate identification and foodwebs, Provision of plants and assistance for School's National Tree day
- **St Annes Primary School**—Supporting students to become "agents of change" and transform an old garden bed into a native garden which demonstrates the transition between coastal, woodland, riparian and rainforest environments.
- **Alligator Ck School**—Plant identification and information about bushland adjacent to school grounds, seed collection activities at Hay Point foreshore with Conservation Volunteers Australia.
- **Sarina State High School**— Water quality, catchment management activities at Plane Creek
- **SSHS Sarina Rural Skills Centre**—Water quality monitoring in sediment basin, construction of aquaponic units for Blue green algae project.

Sarina Catchment School's Program

- **"Caring for Our Catchment"** (*Funding by Hail Creek Mine Community Development Fund*). Provided 310 students from 4 local schools the opportunity to participate in 3 interactive educational activities; A waterways health check (SLCMA). Waste & water minimisation (Mky Regional Council), Catchment Role Play (Great Barrier Reef Marine Park Authority GBRMPA)
- **"Caring for Our Coasts"** (*Funded by BMA Community Partnerships Program*). Provided 250 students from 2 local schools the opportunity to participate in 5 interactive educational activities; Sustainable fishing (by GBRMPA), Shorebirds and coastal habitats (Pioneer Catchment & Landcare), Coastal dunes habitats (SLCMA), The River Story (National Green Jobs Corps).

SLCMA has been fortunate to receive funding from Dalrymple Bay Coal Terminal Management. This will provide future support to local schools and encourage participation in undertaking sustainable environmental practices.



St Annes students learning about our coasts

Program & project updates

SLCMA Community Volunteer Program

The SLCMA Community Volunteer Program provides an opportunity for community members to gain knowledge about our local native plants and gain skills in plant propagation and nursery activities.

Many THANKYOU's to our volunteers who contributed their time, experience and smiles on our volunteer mornings. The weekly program has operated since 2003, and to date we have had 101 volunteers registered (both present and past). That is over 11,000 hours of volunteer time *and approximately 308 yummy morning teas* 😊.

The team of volunteers are an essential part of the success of the SLCMA Community Nursery—taking part in the whole process from plant identification and seed collection to seed cleaning, propagation and general nursery activities.

Throughout the 09/10 year, we have had some new faces join our team and sadly, some familiar faces no longer with us, but any amount of time that our volunteers have dedicated to Landcare are treasured and enjoyed by all. We look forward to continuing the successful volunteer program into 10/11, and beyond.



L-R: Anke, Stuart, Jayden, Bryce, Margaret, Neil, Kevin, Sandy, Gail, Mark, Margaret and Jeanie enjoying a trip to Sarina Inlet

SLCMA Community Nursery



The SLCMA Community Nursery has been utilized as a training facility by a range of community members throughout the year, including volunteers, Scouts, TAFE students and Green Corps participants. All of whom, have learnt about native plant identification, propagation and general nursery procedures.

With the assistance of our volunteers, the nursery has produced approximately 5000 native plants throughout the year, which have been utilized for community projects, schools plantings, Environmental Awareness Days and Landcare Member plant allocations (*up to 20 free native plants per member per year*). SLCMA is now selling plants at the local Sarina markets, with the funds raised put back in, to support the nursery and associated volunteer program.

Throughout the year, SLCMA gained permission from Mackay Regional Council to extend the nursery facility and received financial support from Dalrymple Bay Coal Terminal Management to purchase necessary material and equipment for the upgrade. The extensions will include extra sun hardening benches, new irrigation system and propagation area and are due to begin in late 2010.

Thank you to the Landholders who have given us permission to collect seed on their property and to some of you who have brought seed in throughout the year—this has allowed SLCMA to build our seedbank and an opportunity to propagate a diverse range of plant species.

Sarina Green Corps & National Green Jobs Corps



Sarina Green Corps Team: Apr-Aug 2009

The Australian Government "Green Corps program" was changed this year to the "National Green Jobs Corps Program" and consequently there has been some changes in how the program operates. SLCMA has been fortunate to be a part of both programs, with the last Sarina Green Corps team graduating in August 2009 and the new Sarina National Green Jobs Corps team beginning in March 2010.



Sarina National Green Corps Team: Mar—Sep 2010

The participants in the Sarina Green Corps team gained practical skills in such as stock fencing, revegetation, track maintenance and weed management while working on a number of community projects around the Sarina Catchment. They also completed modules towards Certificate 2 in Land Conservation.

The Sarina National Green Jobs Corps team is a 6 month part-time project due for completion in Sep 2010. The participants have been working on local projects at Armstrong Beach, Louisa Creek Reserve, Sarina Community Native Garden, SLCMA Community Nursery and St Annes Primary School. The participants are gaining practical skills in natural area restoration, weed management and nursery work as well accredited training towards Certificate 2 in Land Conservation.



Community volunteers participate in plant identification, beach clean-up and seed collection activities for *Coastcare Week*

Coastal Management

With the assistance of our project partners, SLCMA has continued to deliver and support projects along our coastlines.

This was the last year of the *Sarina Coastal Sustainable Landscapes Program (SCSLP)*, a 3 year coastal program funded through the BHP Billiton Mitsubishi Alliance—Community Partnerships Program.

The program was delivered in partnership with Mackay Regional Council and Reef Catchments Mackay Whitsunday. The aim of the project was to enhance and protect the coastal foreshores of the developed beaches within the old Sarina Shire boundaries, as per the *Sarina Shire Beaches Management Guidelines for Coastal Zones* (Aug 2006) and individual beach plans (Apr 2008).

Some achievements throughout the year include:

- Facilitation of community awareness raising events: National Tree Day, Clean Up Australia Day, Coastcare Week, displays at Sarina markets
- Coordination and delivery of Sarina Catchment School Activity Days—Caring For Our Coasts
- Continuation of Regional Coastal Steering Group Meetings
- Continuation of the Council Beach Team to undertake strategic onground activities such as weed control, revegetation.
- Undertake annual coastal monitoring (*as per Sarina Shire Beaches Management Guidelines for Coastal Zones*)
- Support Community coastal demonstration projects at Louisa Creek Reserve, Armstrong, Campwin, Hay Point beaches and Residential coastal projects at Sarina & Salonika beaches through technical support, links to funding opportunities, native seedlings, onground assistance through Green Corps and Conservation Volunteers Australia teams.
- Coverage of events & activities in SLCMA and Council Newsletters, local newspapers and television local news stories.



Sarina Green Corps team help out at Captain Blackwood Drive, Sarina Beach

Monitoring & remediation of blue-Green algae outbreaks within coastal aquatic ecosystems project

The Monitoring and Remediation of Blue-Green Algae Outbreaks within the Coastal Aquatic Ecosystems Project is underway with monthly monitoring at three sites on Middle Creek Dam. The purpose of this innovative project, which is the first of its kind in Sarina, is to grow native vegetation on aquaponic units to reduce and limit available nutrients and trace elements in the dam which have the potential to encourage blue-green algae outbreaks.

Currently located at each of the 3 sites are 2 floating aquaponic units, which were constructed by the Sarina State High School Rural Skills Centre. Vegetation growing on the pontoons includes native *Lephostemons*, *Melaleucas*, *Callistemon* and *Lomandra* species. The plants were direct seeded by the SLCMA volunteers and their growth and survival rates are included within the monthly monitoring framework. The plants have now reached the required height to begin collection for laboratory analysis of nutrient uptake.



Floating aquaponic unit

To compliment the plant monitoring other water quality data is collected at each site. The parameters include pH, dissolved oxygen, water temperature, electrical conductivity, turbidity and visual inspection for the presence of algae, native aquatic plants and invasive water weeds.

The project is funded through Australian Government Caring For Our Country, Community Action Grants program and is due for completion in April 2011.



Sarina Community Native Garden

The Sarina Community Native Garden project is progressing, with two gardens currently being established. The main aim for the project is to encourage and demonstrate the use of native plants in urban gardens as well as be utilised as an educational resource for the community, volunteers and Sarina youth.

SLCMA is currently working with staff from Mackay Regional Council, Mackay Regional Botanic Gardens and volunteers from Society for Growing Australian Plants to plan for the next stages of the project. This so far has included identifying suitable plant species and groupings, designs for a potential wetland area and observing the site to see how the land reacts in the wet & dry seasons.

SLCMA has received funding for the next stage of the project through the Mackay Regional Council—Natural Environment Program. The next stage is planned for the end of 2010 with site preparations such as some excavation work, mounding of garden beds and mulching, in time for planting in 2011.

Supporting landholders within the Sarina catchment

Pest-peri-urban Project (*Funded by Blue-print for the Bush via the Mackay Regional Pest Management Group*)
The objectives of this project were to build the capacity of peri-urban landholders for better land management. SLCMA has been working with Pioneer Catchment & Landcare Group (PCL) and, Whitsunday Catchment Landcare (WCL) to develop the program and then deliver it locally within our individual catchment areas.

This has enabled SLCMA to offer free property visits to landholders, provide technical advice, distribute information and awareness package on topics such as biosecurity, biodiversity, livestock, pest management and develop individual pest management plans.

Peri-Urban Land Management Project (*Funded by Reef Catchments Mackay Whitsunday*)

The aims of this project was to provide extension to peri-urban landholders, develop a cross catchment framework identifying at high risk from peri-urban activities and benchmark current activities in regards to nutrients, pesticides, soil, weeds and biodiversity. Landholders were invited to attend awareness raising events, received technical information and a land management plan for their property.

Feral Pig Information Session: Provided an opportunity for landholders and the general community to discuss with staff from SLCMA, DPI&F, Council and QLD Parks & Wildlife about; control techniques, environmental costs of pig damage, health risks to human & stock.

Control of Giant Rats Tail presentation by Corey Bell (DEEDI) provided information about the identification and management of GRT.

Other Resources available:

- ☐ **Lantana Splatter Gun** is available to landholders for hire. SLCMA provides training on the use & cleaning of the spray equipment.
- ☐ **Feral Pig traps** available for loan.
- ☐ **Resource books:** Plant & weed reference books available for purchase.
- ☐ **Tree planting kits** available for purchase.



Other projects delivered

- **Macreef boat ramp surveys** (*funded by Reef Catchments Mackay Whitsunday*)
- **African Tulip Pilot project** (*funded by Mackay Regional Council—Natural Environment Program*)
- **Improving community awareness & landholder capacity for NRM in Sarina Catchment** (*Australian Government-Community Action Grants*)
- **Enhancing coastal vegetation within Louisa Creek Reserve** (*Reef Catchments Public Fund*)
- **Administration support** (*Australian Government-Grants to voluntary Environment & Heritage Organisations*)

Communication & publications



- **SLCMA Catchment News** (your local newsletter) is distributed monthly to approximately 200 members. The newsletter is a great way for land managers to keep up-to-date with available funding, workshops, field days, volunteer opportunities and the latest natural resource management news.
- **SLCMA Calendar 2010** was again a hit—showcasing some scenic spots throughout the Sarina Catchment. It also includes important dates such as general meetings, environmental awareness events and cattle sales.
- **SLCMA General meetings** are held monthly and, are an opportunity for members and the community to discuss and learn more about Landcare related topics, local issues and solutions.

Supporting Community Events

- **Landcare Day in the Gardens** (Aug 09) - SLCMA attended the event with the Mky Regional Pest Management Trailer and assisted with the Landcare display.
- **National Tree Day** (Aug 09) - Volunteers planted 140 native coastal plants within the Louisa Creek Reserve—contributing to the projects with the *Barefoot Radler Coastcare & Sarina Coastal Sustainable Landscapes Program*.
- **Coal to Coast Festival** (Sep 09) - SLCMA attended with the Landcare display, plant sale and other land management information.
- **Sarina Native Garden Competition** (Sep 09) - SLCMA in partnership with Mackay Regional Council and through support via Natural Resource Awareness Grants ran the native garden competition. The competition show cased a range of innovative ways that native plants can be utilised in a garden.
- **Coastcare Week** (Dec 09)— was celebrated over 5 days with volunteers and community members participating in revegetation, marine debris cleanups, weed removal, watering and maintenance of existing plantings and seed collection at the Sarina beaches. SLCMA partnered with Conservation Volunteers Australia with support through the BMA—Community Partnerships Program.
- **Clean Up Australia Day** (Mar 10) - SLCMA partnered with Conservation Volunteers Australia, Coalport Community Recreation Association and Mackay Regional Council to help collect 80kg of rubbish at Louisa Creek Reserve and foreshore. This event was supported by BMA-Community Partnerships program.
- **Relay for Life** (May 10) — SLCMA volunteers, staff & members joined the “Gum-nut” team to participate in the annual Sarina Relay for Life, a fundraising event for cancer research.
- **BSES Field Day** (May 10)— SLCMA assisted Pioneer Catchment & Landcare Group, Whitsunday Catchment Landcare and the Mky Regional Pest Management Group with a display at the annual BSES Field day. It is always a great opportunity to chat with landholders & promote some of our projects & programs available.



The SLCMA Gum Nut team at the Sarina Relay For Life

Landcare display at Eco Expo



- **Grazing Field Day and Paddock Walk** (Jun 10) - The field day was held at the Sarina Rural Skills centre and was organised by Agforce. SLCMA attended the event with the Regional Pest trailer and offered pest management information and advice to landholders who attended.
- **Ecoexpo** (Jun 10) - The event was held at Queens Park and was organised by the Mackay Conservation Group. SLCMA joined local businesses and other community groups to demonstrate solutions for a sustainable future for our local environment.
- **Sarina markets** — SLCMA now has a stall at the monthly Sarina markets, which makes a range of land management information available to the community as well as having native plants available for purchase.

Working Groups & other projects supported

SLCMA is represented on the following working groups/committees:

- Central QLD Coast Landcare Network
 - ◊ COCLN Regional Website development project
- Mackay Whitsunday Regional Pest Management Group
 - ◊ Leuceana Mapping Project
 - ◊ Development of Regional Weed book
 - ◊ Sarina Field Trip for 2011 QLD Weed Symposium
- Regional Coastal Steering Group
- Mackay Regional Council — Natural Advisory Committee

Conferences, workshops & courses

- **QLD Landcare Conference**, Longreach (Oct 09)
- **National Landcare Forum**, Adelaide (Mar 10)



Members of SLCMA, PC&L, WCL at Longreach

SLCMA is supported by:

